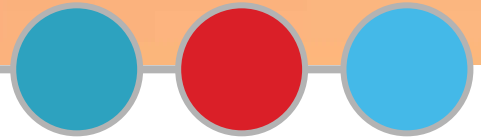


Washington Extension Youth Enrollment



WASHINGTON STATE UNIVERSITY
 EXTENSION
4-H Youth Development Program 

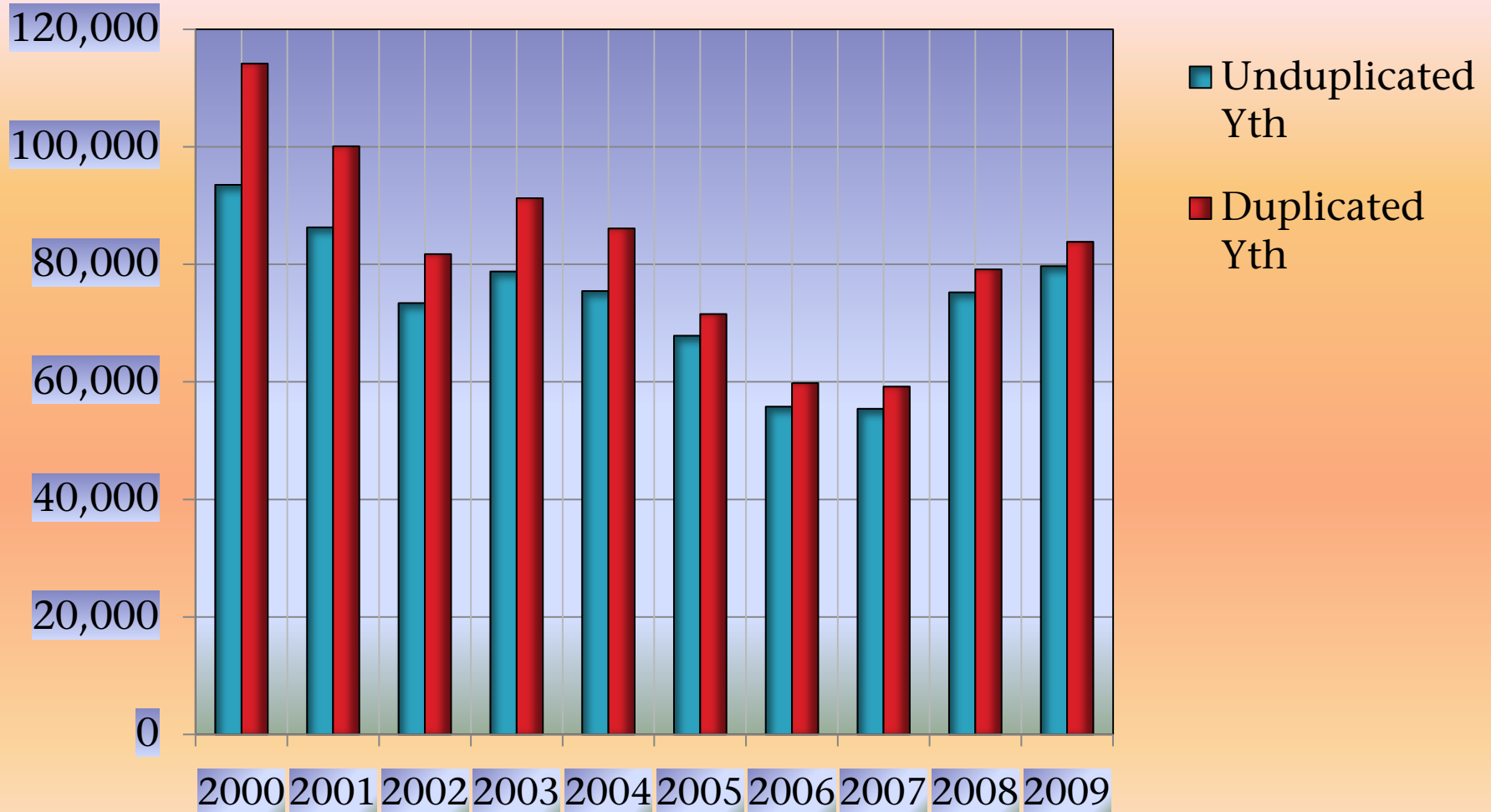
WSU Extension Youth Enrollment Statistics

A 10-Year View

Nancy Mordhorst, Program Coordinator
Washington State University Extension

April 2010

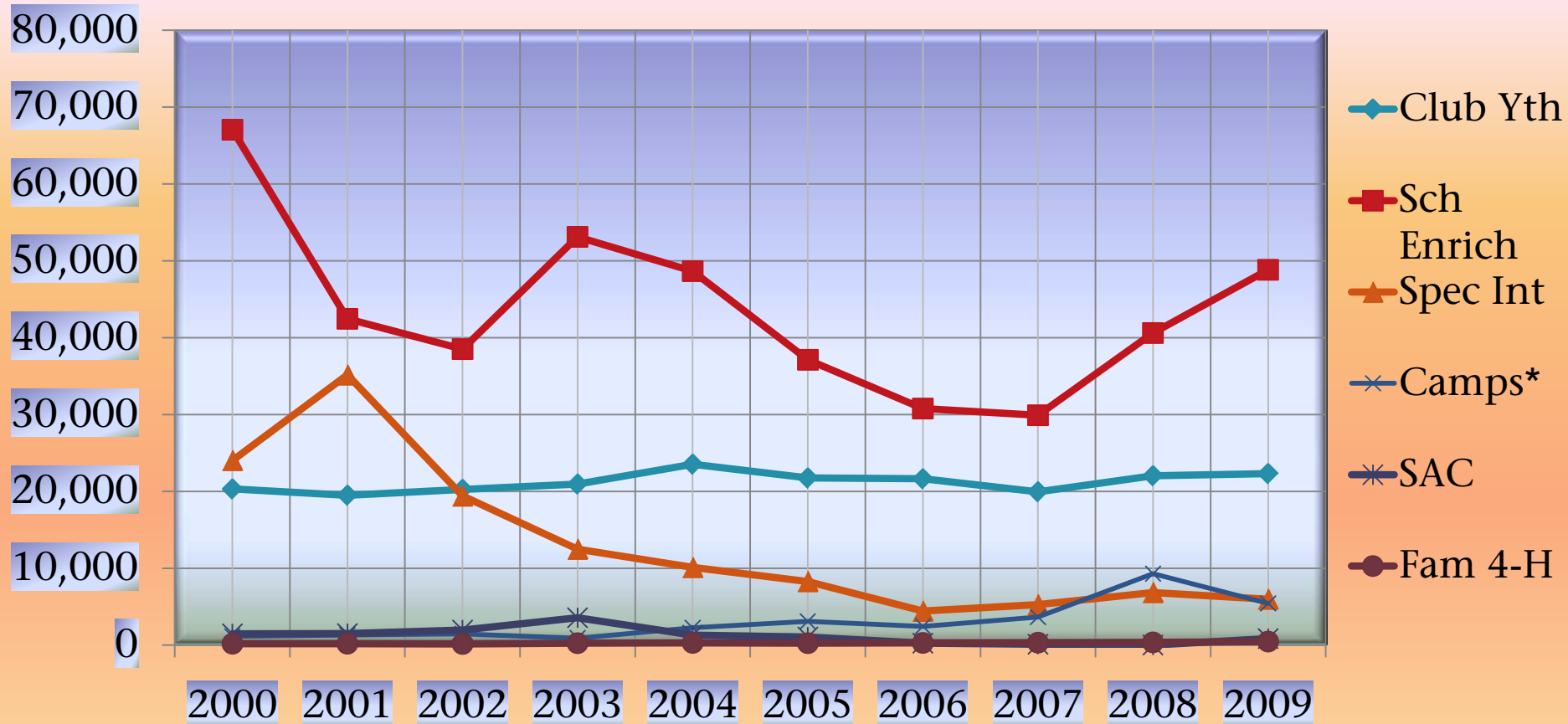
Youth Enrollment



Youth Enrollment

Year	Unduplicated Youth	Duplicated Youth
2000	93,533	114,177
2001	86,309	100,113
2002	73,424	81,728
2003	78,789	91,263
2004	75,475	86,098
2005	67,852	71,523
2006	55,795	59,796
2007	55,408	59,204
2008	75,245	79,142
2009	79,678	83,826

Youth by Delivery Method



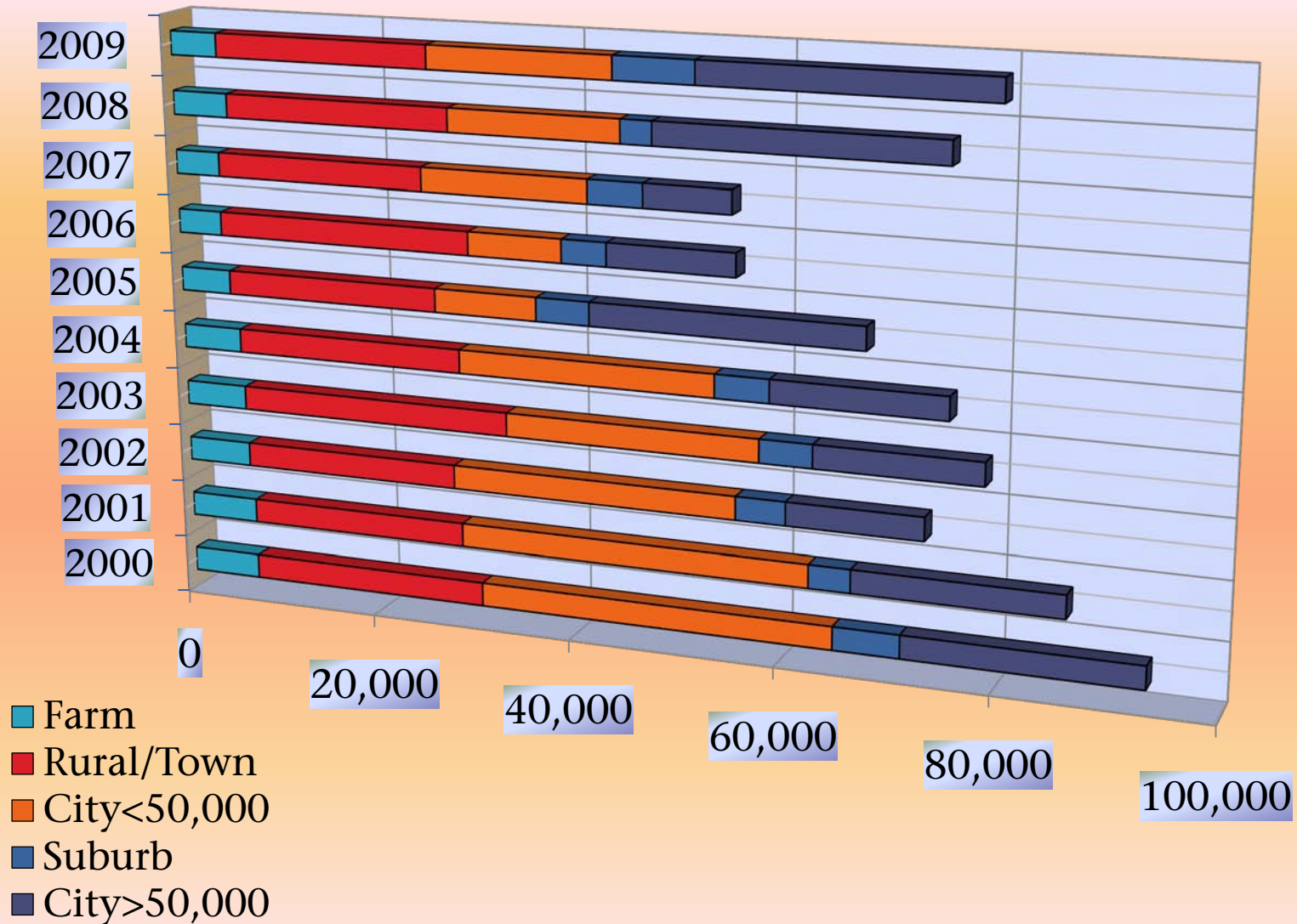
Includes duplications - those youth participating in two or more Ext. youth programs.

*Prior to '04, Day Camps were included in Sp. Int. instead of the Camp delivery mode.

Youth by Delivery Method

Year	Club Yth	Sch Enrich	Spec Int	Camps*	SAC	Fam 4-H
2000	20,309	67,064	24,033	1,141	1,457	173
2001	19,502	42,466	35,158	1,322	1,488	177
2002	20,254	38,504	19,408	1,461	1,958	143
2003	20,946	53,141	12,485	906	3,552	233
2004	23,530	48,668	10,107	2,241	1,281	271
2005	21,742	37,129	8,270	3,086	1,051	245
2006	21,634	30,770	4,415	2,444	235	298
2007	19,952	29,914	5,273	3,649	93	323
2008	22,031	40,597	6,844	9,289	11	370
2009	22,310	48,833	5,977	5,426	830	450

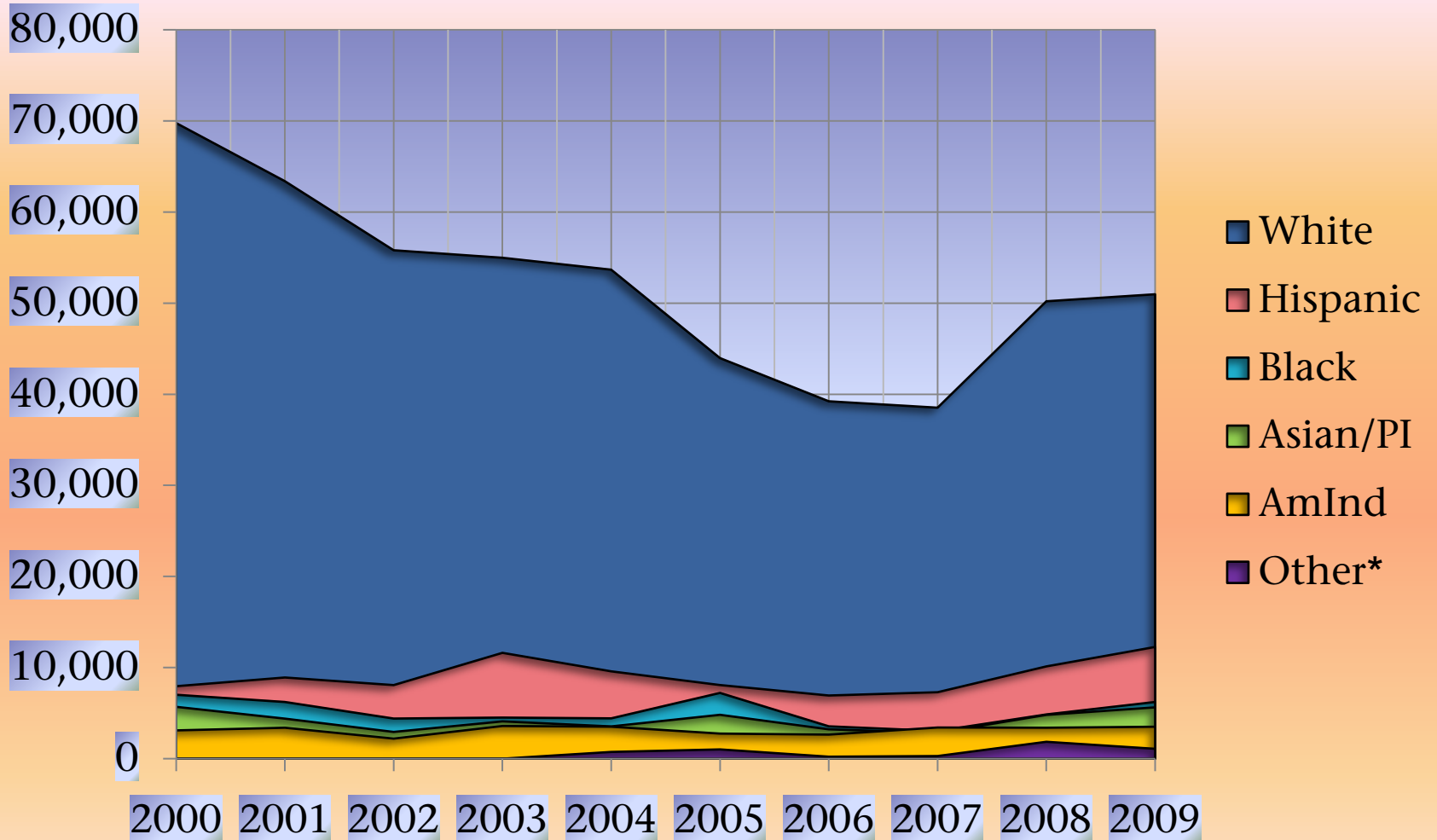
Youth by Residence



Youth by Residence

Year	Farm	Rural/Town	City<50,000	Suburb	City>50,000
2000	6,826	23,778	34,419	6,316	22,194
2001	6,841	21,839	34,026	3,967	19,636
2002	6,395	21,563	27,812	4,753	12,901
2003	6,217	27,166	24,613	5,024	15,769
2004	5,953	22,805	25,009	5,174	16,534
2005	5,098	21,341	10,095	5,210	26,108
2006	4,422	25,467	9,217	4,368	12,321
2007	4,495	20,855	16,352	5,321	8,385
2008	5,579	22,545	16,786	3,005	27,330
2009	4,725	21,441	18,042	7,773	27,697

Youth by Ethnic Distribution

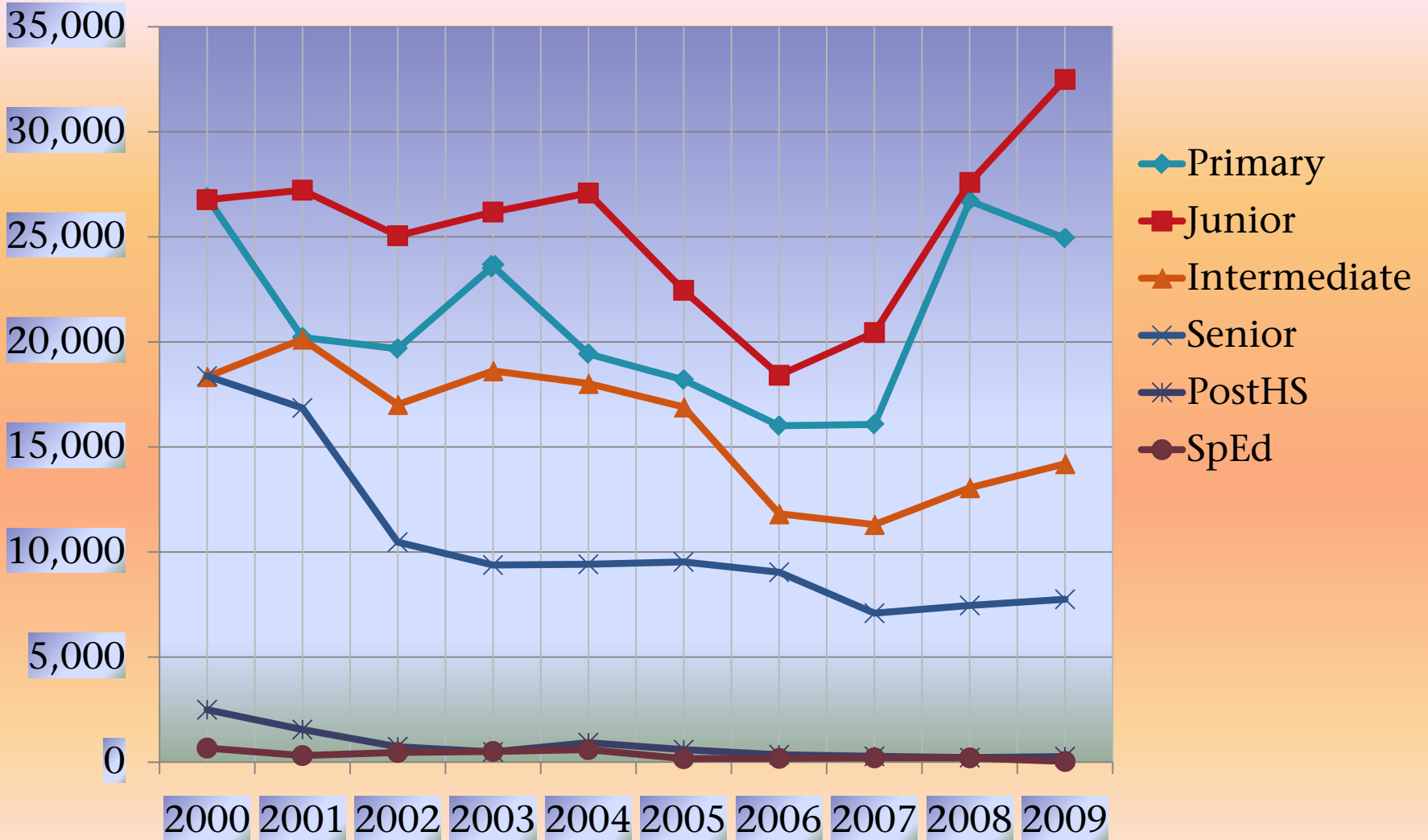


***Other was added as a field in 2004**

Youth by Ethnic Distribution

Year	White	Hispanic	Black	Asian/PI	AmInd	Other
2000	69,767	7,953	7,016	5,692	3,105	0
2001	63,383	8,910	6,222	4,397	3,397	0
2002	55,802	8,077	4,405	2,937	2,203	0
2003	54,977	11,617	4,511	4,095	3,589	0
2004	53,668	9,586	4,426	3,545	3,509	741
2005	43,965	8,081	7,217	4,816	2,754	1,019
2006	39,225	6,934	3,553	3,221	2,643	219
2007	38,524	7,294	3,044	2,834	3,422	290
2008	50,202	10,127	4,857	4,806	3,398	1,855
2009	50,972	12,261	6,222	5,633	3,505	1,085

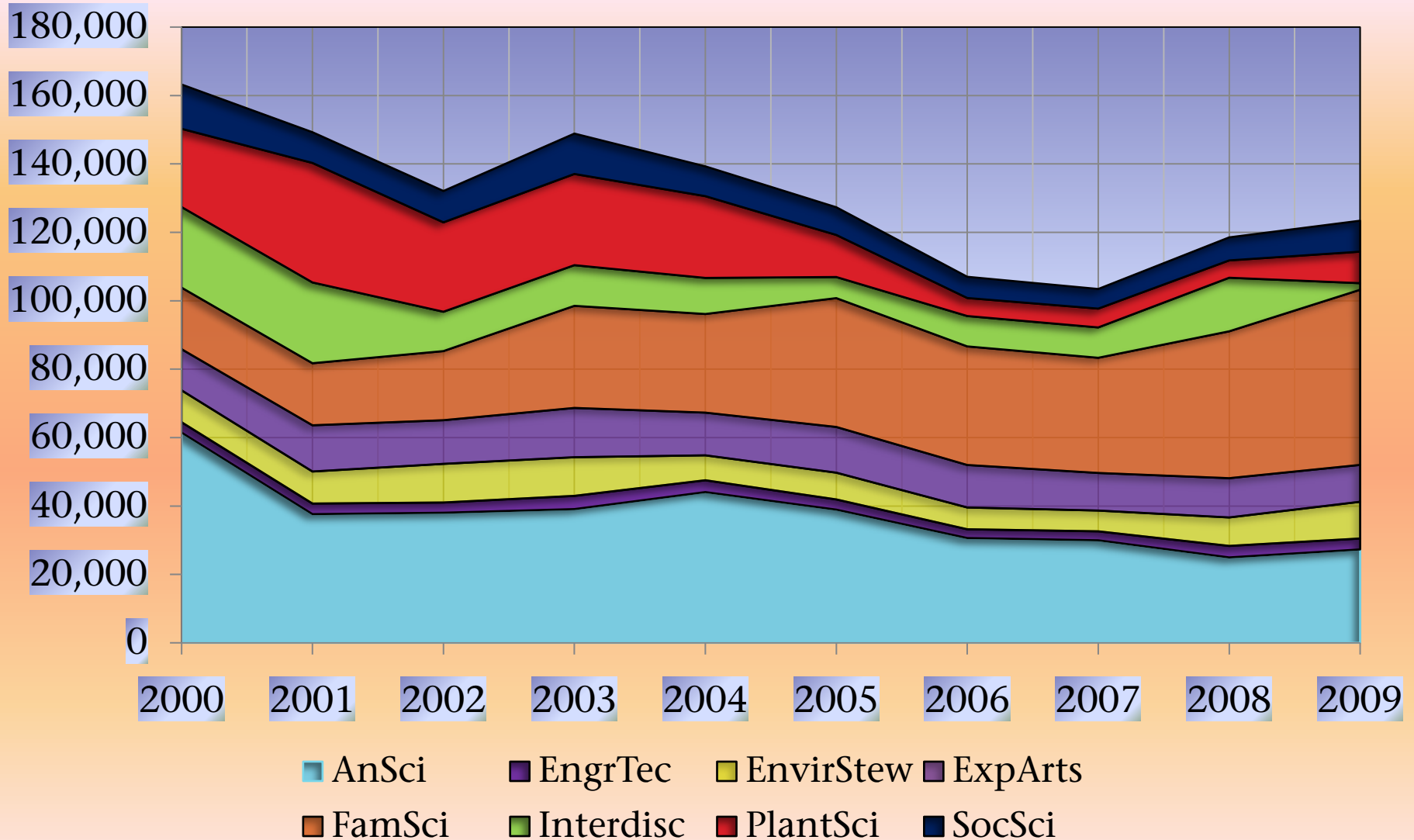
Youth by Grade Distribution



Youth by Grade Distribution

Year	Primary	Junior	Intermediate	Senior	PostHS	SpEd
2000	26,877	26,767	18,343	18,377	2,493	676
2001	20,218	27,224	20,130	16,858	1,558	321
2002	19,672	25,058	17,019	10,479	730	466
2003	23,604	26,180	18,622	9,383	490	510
2004	19,431	27,090	18,017	9,415	929	593
2005	18,196	22,461	16,901	9,524	597	173
2006	16,005	18,411	11,815	9,036	351	177
2007	16,072	20,447	11,305	7,094	285	205
2008	26,712	27,588	13,057	7,462	216	210
2009	24,935	32,487	14,201	7,752	273	30

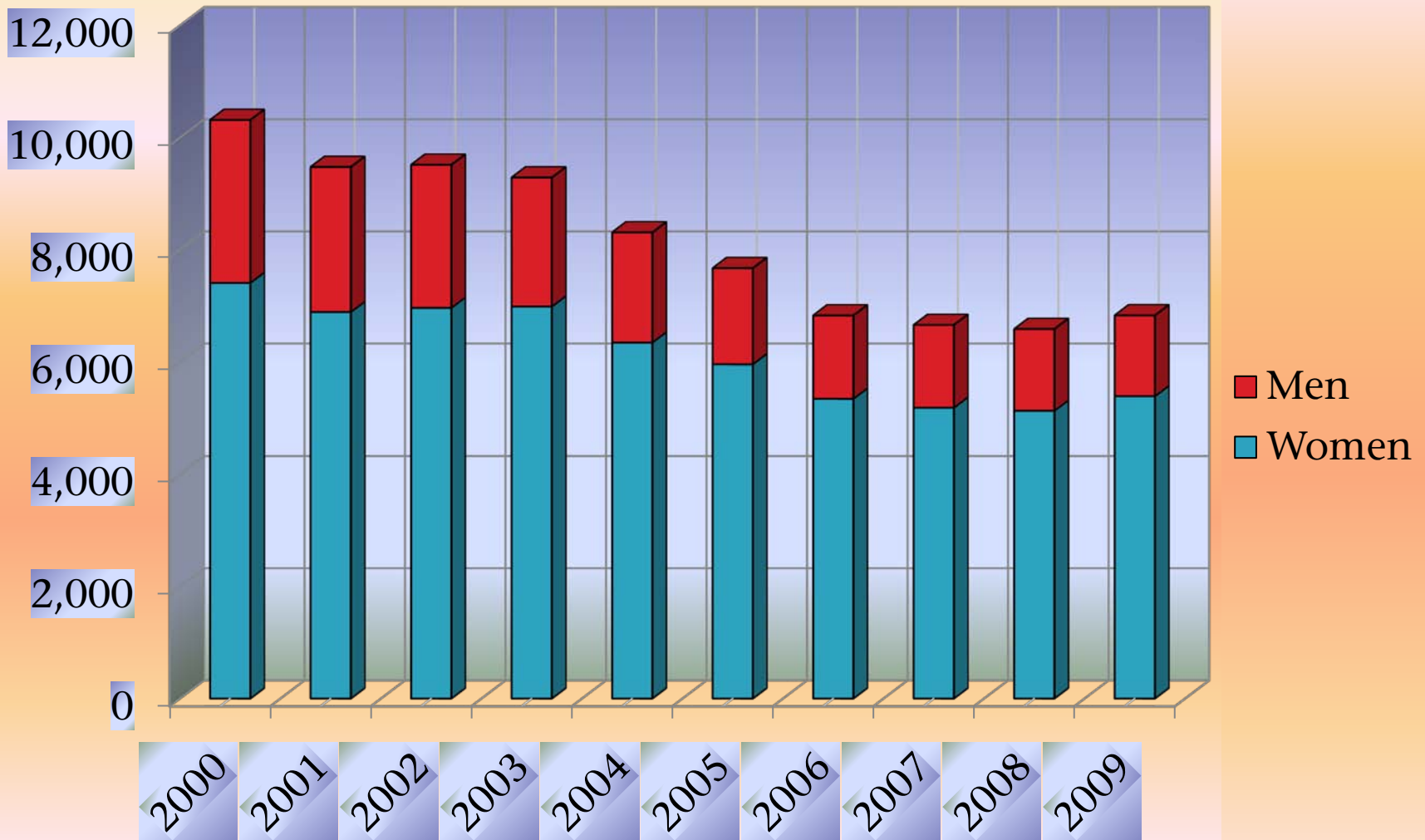
Youth Project Enrollments



Youth Project Enrollments

Year	AnSci	EngrTec	EnvirStew	ExpArts	FamSci	Interdisc	PlantSci	SocSci
2000	61,471	3,027	9,323	12,028	17,996	23,561	22,865	12,950
2001	37,628	3,088	9,366	13,513	18,141	23,618	34,937	8,975
2002	38,040	2,982	11,297	12,757	20,208	11,505	26,130	9,170
2003	39,094	3,869	11,298	14,406	29,847	11,891	26,662	11,798
2004	44,071	3,455	7,286	12,483	28,832	10,549	23,903	8,707
2005	38,942	2,976	7,823	13,361	37,668	6,169	12,295	8,093
2006	30,637	2,565	6,365	12,419	34,668	8,880	5,266	6,205
2007	29,979	2,621	6,068	10,988	33,670	8,874	5,492	5,746
2008	24,974	3,359	8,317	11,479	42,938	15,661	5,063	6,734
2009	27,302	3,195	10,736	10,777	51,203	1,928	9,207	9,052

4-H Adult Volunteers



4-H Adult Volunteers

Year	Women	Men
2000	7,406	2,907
2001	6,886	2,588
2002	6,960	2,553
2003	6,984	2,302
2004	6,341	1,966
2005	5,955	1,714
2006	5,348	1,477
2007	5,188	1,467
2008	5,134	1,449
2009	5,394	1,432